



CRANE SPECIFICATIONS

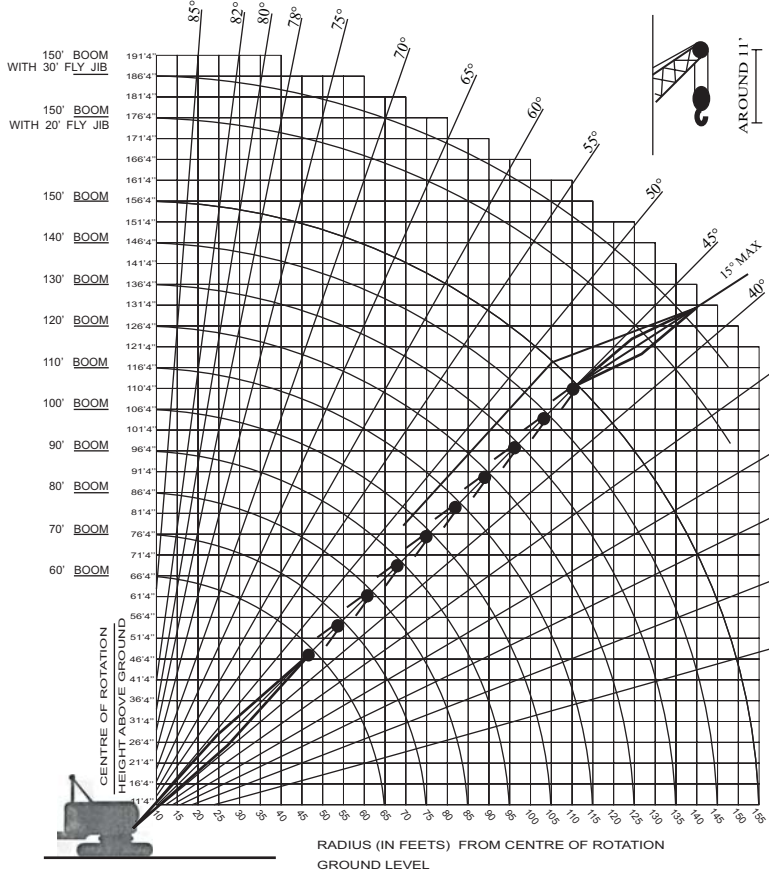
1055B-LC

TATA MODEL 1055B LC-100 TON-CRANE CLASS 15-530 HEAVY DUTY ANGULAR BOOM

RATED CRANE LOADS IN LBS.(Kg.)- Main Boom

OPERATING RADIUS	ANGLE	60'-0" BOOM (18.29m. BOOM)		70'-0" BOOM (21.34m. BOOM)		80'-0" BOOM (24.38m. BOOM)		90'-0" BOOM (27.43m. BOOM)		100'-0" BOOM (30.48m. BOOM)		110'-0" BOOM (33.53m. BOOM)		120'-0" BOOM (36.58m. BOOM)		130'-0" BOOM (39.62m. BOOM)		140'-0" BOOM (42.67m. BOOM)		150'-0" BOOM (45.72m. BOOM)		
		BOOM PT. EL. FEET (METRE)	RATING POUND (Kg.)	BOOM PT. EL. FEET (METRE)	RATING POUND (Kg.)	BOOM PT. EL. FEET (METRE)	RATING POUND (Kg.)	BOOM PT. EL. FEET (METRE)	RATING POUND (Kg.)	BOOM PT. EL. FEET (METRE)	RATING POUND (Kg.)	BOOM PT. EL. FEET (METRE)	RATING POUND (Kg.)	BOOM PT. EL. FEET (METRE)	RATING POUND (Kg.)	BOOM PT. EL. FEET (METRE)	RATING POUND (Kg.)	BOOM PT. EL. FEET (METRE)	RATING POUND (Kg.)	BOOM PT. EL. FEET (METRE)	RATING POUND (Kg.)	BOOM PT. EL. FEET (METRE)
15 (4.57)	80	67'-2" (20.47)	200000 (90720)																			
20 (6.10)	75	66'-1" (20.14)	139140 (63110)																			
25 (7.62)	70	64'-6" (19.66)	100800 (45720)																			
30 (9.14)	65	62'-5" (19.02)	78510 (35610)																			
35 (10.67)	59	59'-9" (18.21)	63940 (29000)																			
40 (12.19)	54	57'-5" (17.50)	53670 (24340)																			
45 (13.72)	47	52'-3" (15.93)	46040 (20880)																			
50 (15.24)	41	47'-0" (14.32)	40150 (18210)																			
55 (16.76)	33	40'-3" (12.27)	35460 (16080)																			
60 (18.29)	22	30'-3" (9.22)	31640 (14350)																			
65 (19.81)																						
70 (21.34)																						
80 (24.38)																						
90 (27.43)																						
100 (30.48)																						
110 (33.53)																						
120 (36.58)																						
130 (39.62)																						
140 (42.67)																						

NOTE: OPERATING RADIUS IS HORIZONTAL DISTANCE FROM THE CENTRE LINE OF ROTATION TO A VERTICAL LINE THROUGH THE GRAVITY CENTRE OF THE LOAD CAPACITIES SHOWN ARE NOT MORE THAN 75% OF THE TIPPING LOADS WITH MACHINE STANDING ON A FIRM, LEVEL, UNIFORMLY SUPPORTING SURFACE. THE CRANE RATINGS INCLUDE WEIGHT OF HOOK, BLOCKS, SLINGS & OTHER LOAD HANDLING ACCESSORIES. MACHINES EQUIPPED WITH FOLDING GANTRY MUST NOT BE USED FOR LIFTING OPERATIONS WITH GANTRY IN LOWERED POSITION MACHINE WITH BASIC LENGTH BOOM MAY BE TRANSPORTED OR CRAWLED WITH GANTRY IN LOWERED POSITION. STANDARD BOOM HOIST REEVING FOR CRANE AND CLAMSHELL: 8 PARTS OF THE LINE FOR BOOM LENGTHS UP THRU 70 FT. (21.34m), 10 PARTS OF THE LINE FOR BOOM LENGTHS 80 FT. (24.38m) & OVER. STANDARD BOOM HOIST REEVING FOR DRAGLINE: 8 PARTS OF THE LINE FOR ALL BOOM LENGTHS CENTRE HITCH REQUIRED FOR BOOM LENGTHS 80 FT. (24.38m) & OVER.

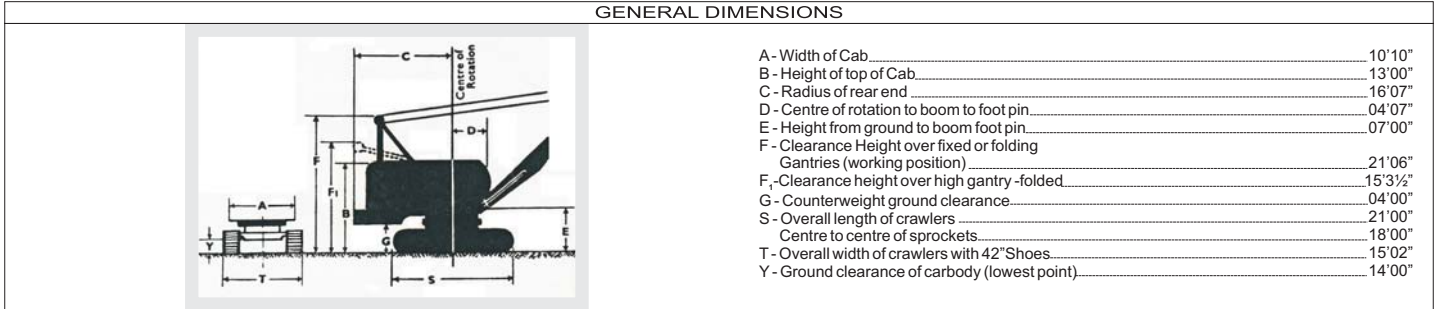


HOIST REEVING					
NO OF PARTS OF LINE	1	2	4	6	8
FOR LOADS UPTO	25000 Lbs 11340 Kg.	50000 Lbs 22680 Kg.	100000 Lbs 45360 Kg.	150000 Lbs 68040 Kg.	200000 Lbs 90720 Kg.

WEIGHT OF LOAD HANDLING ACCESSORIES	
SINGLE SHEAVE HOOK BLOCK	575 Lbs 260 Kg.
FOUR SHEAVE HOOK BLOCK	2875 Lbs 1305 Kg.
SLINGS	200 Lbs Approx (80 Kg. Approx.)
CLAMSHELL/DRAGLINE BUCKET	DEPENDS ON SIZE & MAKE

OFFSET ANGLE JIB TO BOOM UNDER FULL LOAD	MAXIMUM JIB RATINGS	
	20 FT. JIB (6.10m JIB) POUND (Kg.)	30 FT. JIB (9.14m JIB) POUND (Kg.)
5°	16000 (7255)	15000 (6805)
10°	15500 (7030)	14500 (6575)
15°	15000 (6805)	14000 (6350)

BACK STOPS RECOMMENDED FOR ALL BOOM LENGTHS. AT RADII OR BOOM LENGTHS WHERE NO RATINGS ARE SHOWN ON CHART, OPERATION IS NOT TENDERED OR APPROVED. RATINGS ARE BASED UPON FREELY SUSPENDED LOADS & MACHINE STANDING ON FIRM, LEVEL UNIFORMLY SUPPORTED SURFACE. SAFE LOADS DEPEND UPON GROUND CONDITIONS, BOOM LENGTHS, RADIUS OF OPERATION AND PROPER HANDLING, ALL OF WHICH MUST BE TAKEN INTO ACCOUNT BY THE USER. RATINGS ARE CONTINGENT UPON MACHINE BEING EQUIPPED WITH PROPER BOOM.



NOTE: OPERATION OF THIS EQUIPMENT IN EXCESS OF RATED LOADS AND DISREGARD OF INSTRUCTIONS VOIDS WARRANTY.

Data published herein is statistical and for information only. Performance may vary with the conditions encountered
Manufactured and sold in conformance with US Department of Commercial Standard CS-90-58
TELCO reserves the right to make changes in specifications without any advance notice



TATA ENGINEERING AND LOCOMOTIVE COMPANY LIMITED
Jamshedpur, India.